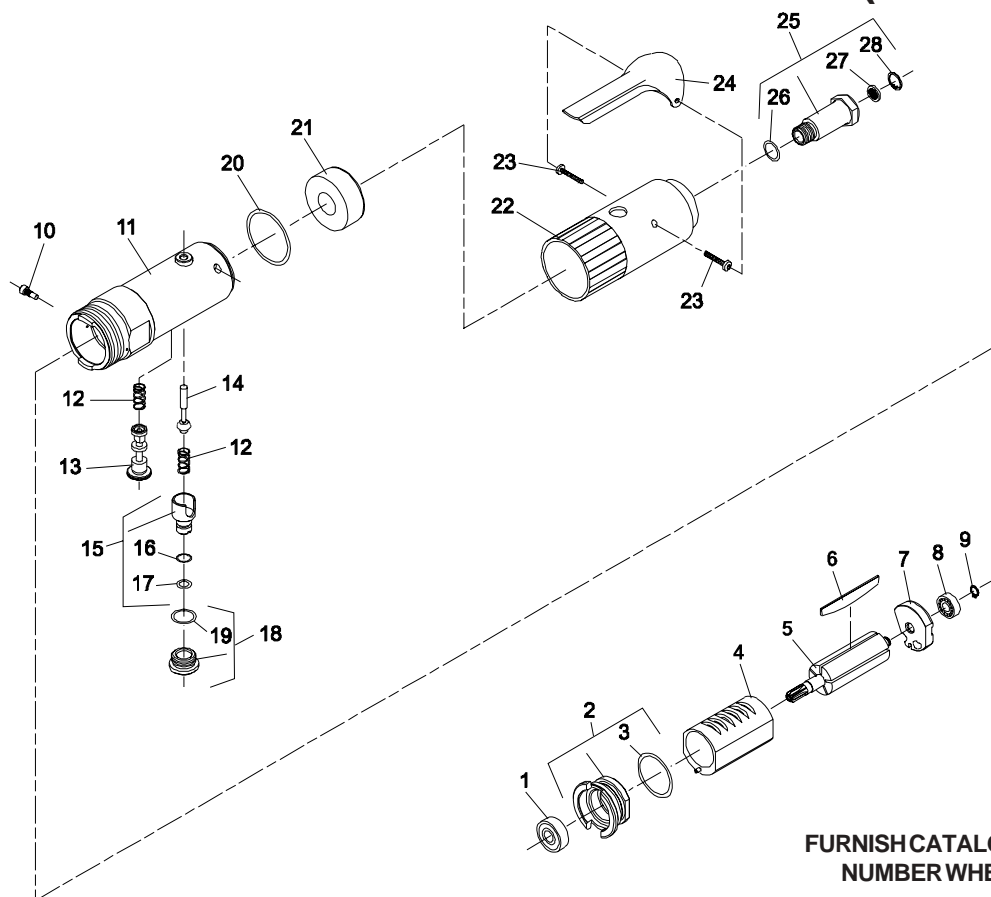




PARTS LIST FOR AIR TAPPER UNITS

2L2100B12 & 2L2100B12BSP (700 RPM)
2L2200B12 & 2L2200B12BSP (1200 RPM)
2L2500B12 & 2L2500B12BSP (400 RPM)

Form Z478
Date 1-98/A
Page 1 of 2



FURNISH CATALOG, SERIAL, AND MODEL
NUMBER WHEN ORDERING PARTS

| Fig. No. | Part No. | Description |
|----------|----------|--------------------------------|
| 1. | 10220 | Bearing—Ball |
| 2. | 13550 | End Plate—Front |
| 3. | 14342 | Ring—"O" |
| 4. | 64108 | Cylinder |
| 5. | 54860 | Rotor (6-Tooth)(700, 1200 RPM) |
| | 54861 | Rotor (8-Tooth)(400 RPM) |
| 6. | 63192 | Assembly—Rotor Vane (Set of 5) |
| 7. | 10552 | End Plate—Rear |
| 8. | 10230 | Bearing—Ball |
| 9. | 21491 | Ring—Retainer |
| 10. | 06254 | Screw—Spool Retaining |
| 11. | 64035 | Housing—Lever |
| 12. | 21427 | Spring (2)* |
| 13. | 64038 | Spool—Valve |
| 14. | 63241 | Assembly—Valve |
| 15. | 54843 | Speed—Control |
| 16. | 14394 | Ring—"O" |
| 17. | 14291 | Ring—"O" |
| 18. | 54844 | Retainer—Speed Control |

| Fig. No. | Part No. | Description |
|----------|----------|---|
| 19. | 14309 | Ring—"O" |
| 20. | 14333 | Ring—"O" |
| 21. | 40116 | Material—Exhaust |
| 22. | 04041 | Cover—Housing |
| 23. | 65499 | Screw—Pan Hd. (Self-Tap)(#6-32x3/4)(2)* |
| 24. | 35737 | Lever |
| 25. | 54837 | Adapter—Intake |
| | 67120 | Adapter—Intake (1/4-19 BSPT) |
| 26. | 14312 | Ring—"O" |
| 27. | 30463 | Screen |
| 28. | 21541 | Ring—Retainer |

COMPLETE ASSEMBLY

| | |
|----------|---|
| 63443 | Assembly—Housing (Includes Figs. 10-23 & 25) |
| 63443BSP | Assembly—Housing (1/4-19 BSPT) (Includes Figs. 10-23 & 25) |
| 63375 | Assembly—Motor (6 Tooth)(700, 1200 RPM) (Includes Figs. 1 thru 9) |
| 63376 | Assembly—Motor (8 Tooth)(400 RPM) (Includes Figs. 1 thru 9) |

*Order Quantity As Required

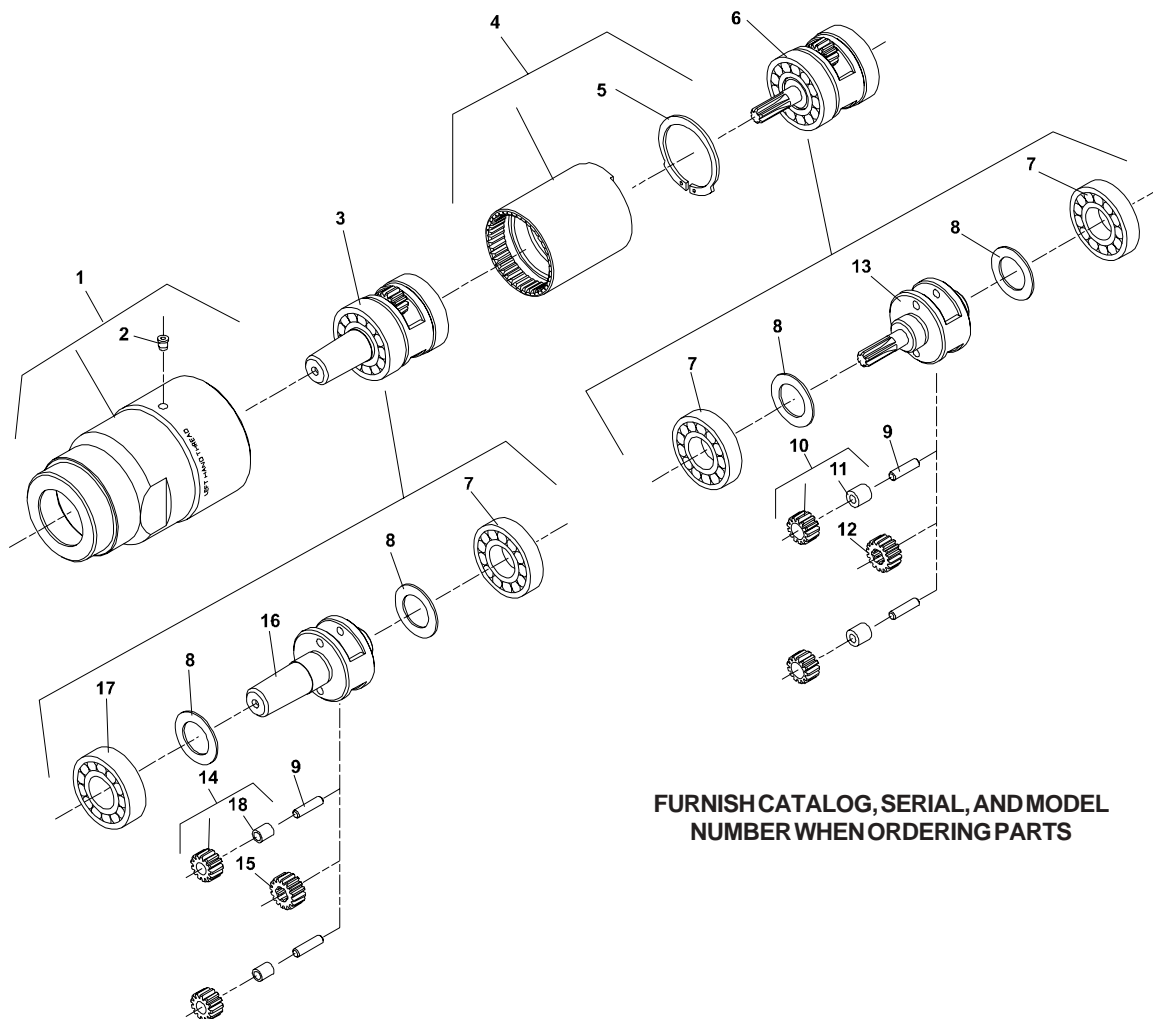
SIouxTM
TOOLS INC.

2901 FLOYD BOULEVARD ■ PO BOX 507 ■ SIOUX CITY, IOWA 51102-0507 USA ■

Printed In U.S.A.



PARTS LIST FOR AIR TAPPER UNITS
2L2100B12 & 2L2100B12BSP (700 RPM)
2L2200B12 & 2L2200B12BSP (1200 RPM)
2L2500B12 & 2L2500B12BSP (400 RPM)



**FURNISH CATALOG, SERIAL, AND MODEL
NUMBER WHEN ORDERING PARTS**

| Fig. No. | Part No. | Description |
|----------|----------|--|
| 1. | 64003 | Case—Gear |
| 2. | 30375 | Fitting—Grease |
| 3. | 65729 | Assembly—Planetary Reduction (400, 700 RPM) |
| | 65731 | Assembly—Planetary Reduction (1200 RPM) |
| 4. | 19266 | Gear—Ring |
| 5. | 21510 | Ring—Retaining |
| 6. | 63386 | Assembly—Planetary Reduction (400 RPM) |
| | 63377 | Assembly—Planetary Reduction (700 RPM) |
| | 63392 | Assembly—Planetary Reduction (1200 RPM) |
| 7. | 10203 | Bearing—Ball (3)* |
| 8. | 25439 | Washer (4)* |
| 9. | 30062 | Pin (4)* |
| 10. | 19314 | Assembly—Gear & Bearing (2)*(400 RPM) |
| | 19331 | Assembly—Gear & Bearing (2)* (700, 1200 RPM) |

| Fig. No. | Part No. | Description |
|----------|----------|---|
| 11. | 10040 | Needle—Bearing (2)* |
| 12. | 19267 | Gear—Pinion (700, 1200 RPM) |
| 13. | 64160 | Gear—Carrier (400 RPM) |
| | 64159 | Gear—Carrier (700 RPM) |
| | 22702 | Gear—Carrier (1200 RPM) |
| 14. | 19314B | Assembly—Gear & Bushing (2)* (400, 700 RPM) |
| | 19331B | Assembly—Gear & Bushing (2)*(1200 RPM) |
| 15. | 19267 | Gear—Pinion (1200 RPM) |
| 16. | 65728 | Carrier—Gear (400, 700 RPM) |
| | 65730 | Carrier—Gear (1200 RPM) |
| 17. | 10228 | Bearing—Ball |
| 18. | 10515 | Bushing (2)*(1200 RPM) |
| | 66886 | Bushing—Oilite (2)*(400, 700 RPM) |

SIouxTM
TOOLS INC.

*Order Quantity As Required